

12/24V Power Supply and Standard Enclosure

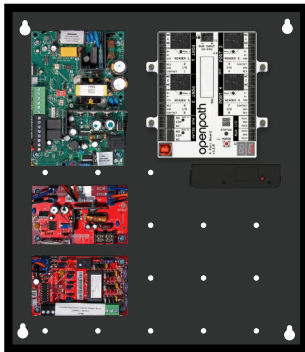
The LifeSafety Power E1 enclosure, FPV4 power supply, B100 secondary supply, and C4 output module provide flexible power for your custom Openpath Smart Hub configurations. The E1 enclosure comes with a custom mounting hole pattern and can fit one Access Control Core and up to two Openpath expansion boards. The FPV4 power supply can be used to output 24V to Openpath boards, while the B100 secondary supply makes 12V available as well. Use the C4 module to output 12V or 24V to locks.



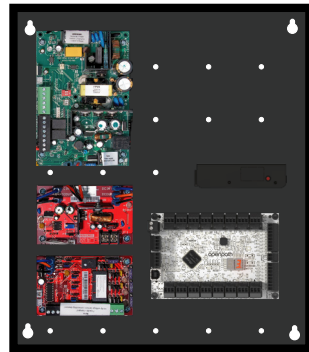
Supported configurations

- **4 Smart Readers:** One Access Control Core and one 4-Port Board
- **2 Smart Readers and 16 Elevator Floors:** One Access Control Core and one 16 I/O Elevator Board
- **6 Smart Readers and 16 Elevator Floors:** One Access Control Core, one 4-Port Board, and one 16 I/O Elevator Board
- **4 Smart Readers and 32 Elevator Floors:** One Access Control Core and two 16 I/O Elevator Boards

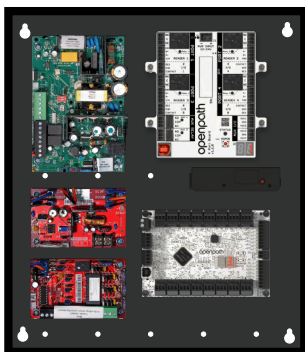
Note: Openpath Access Control Core and expansion boards sold separately. Please take note of power requirements for locking hardware; external power supply may be necessary.



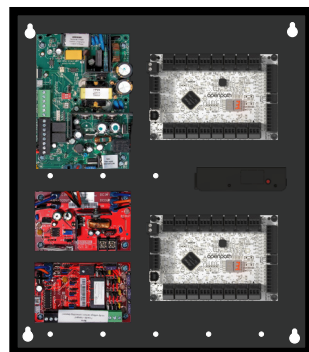
4 Smart Readers



2 Smart Readers and 16 Elevator Floors



6 Smart Readers and 16 Elevator Floors



4 Smart Readers and 32 Elevator Floors

Specifications

- Input:
 - 120/208/230VAC, 50/60Hz
 - 1.80 Amp max
- FPV4 Outputs:
 - 3A @ 24VDC
 - Main output continuous or switched on FAI Input
 - Auxiliary output 1.5 Amp class 2 power limited
- B100 Output:
 - 4 Amps @ 12VDC
- C4 Outputs:
 - Selectable 12v or 24v per output
 - Fused at 3A per output
 - FAI per output
- Enclosure Size: 14" H, 12" W, 4.5" D (356 x 305 x 114 mm)
- Weight: Approx 10 lbs (4.5 kg)
- Operating Temperature: -4° to 122°F (-20° to 50°C)
- Operating Humidity: 5% to 85% relative, non-condensing
- Backup Battery: For 24V, use two 12VDC sealed lead acid (SLA) or gel cell batteries in series
- Supervision:
 - AC fail, Battery fail, System fault (form "C")
 - Low power shutdown when battery voltage too low
- Fire Alarm Disconnect Activation:
 - DC voltage: 0 to 33VDC, 3 to 15mA
 - Dry contact NO/NC
 - Optional Fire Alarm latching
- Visual Indicators: AC On, DC Output, Fire Alarm activation
- Compliance: FCC, IC, CE, RCM, UL 294
- Lifetime warranty